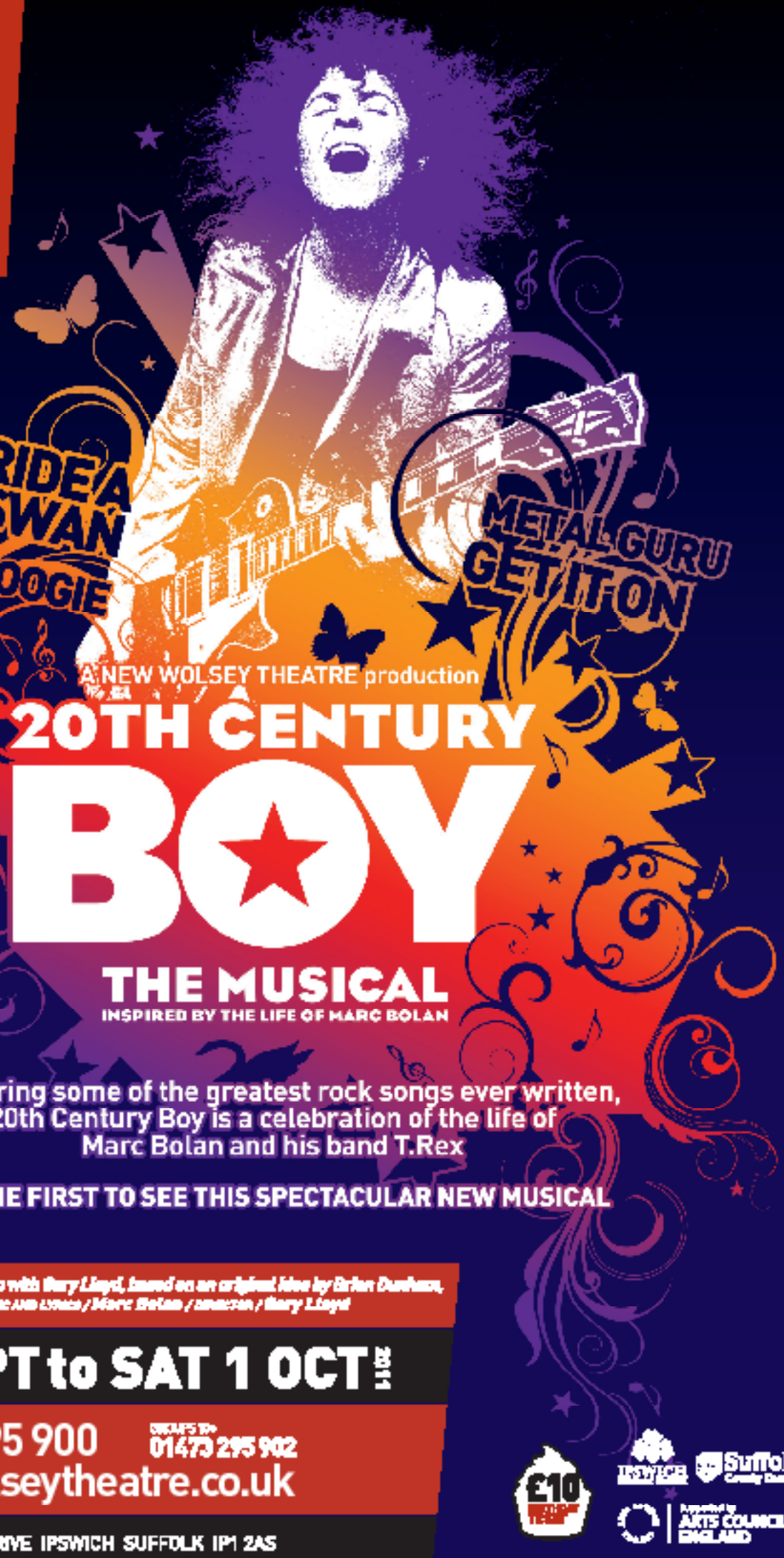


GALLERY
PLAYERS
present



**NEW
WOLSEY
THEATRE**



WRITTEN BY / Peter Rowe in association with Gary Lloyd, based on an original idea by Brian Dunne, Colin Miller and Nicky Graham / MUSIC AND LYRICS / Marc Bolan / direction / Gary Lloyd

THU 8 SEPT to SAT 1 OCT 2011

TICKETS | 01473 295 900 ONCEPS TO 01473 295 902
ONLINE | www.wolseytheatre.co.uk

NEW WOLSEY THEATRE CIVIC DRIVE IPSWICH SUFFOLK IP1 2AS



**GALLERY
PLAYERS**
present



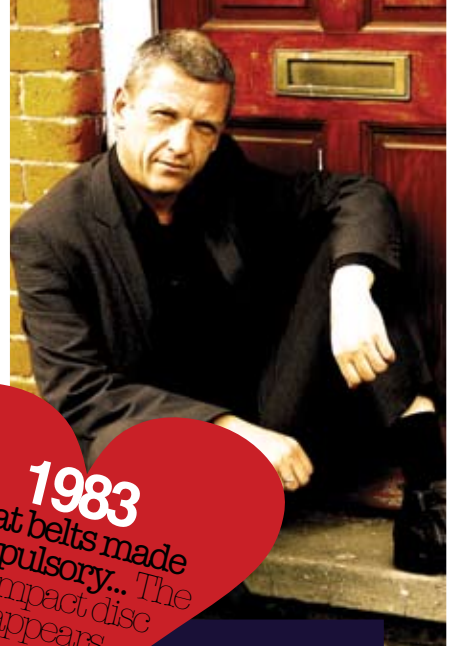
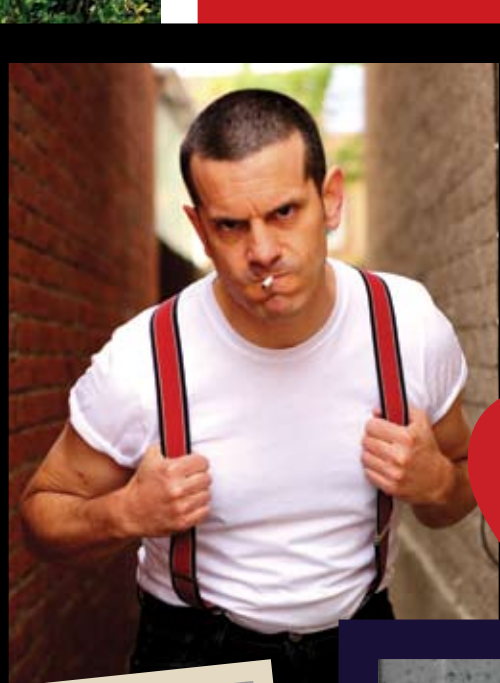
**THE MADNESS
MUSICAL**
MUSIC AND LYRICS
BY MADNESS
BOOK BY TIM FIRTH



- | | |
|-----------------------------------|---------------------------|
| Director | Sally Scurrell |
| Musical Director | Richard Healey |
| Choreographer | David Hockley |
| Set Designer | Dave Borthwick |
| Lighting Designer | Ed Yetton |
| Sound Designer | Lee Boswell |
| Wardrobe | Leeann Ling |
| Stage Manager | Sue Noakes |
| Deputy Stage Manager | Don Perry |
| Assistant Stage Manager | Duncan Broatch |
| Producer | Steve Taplin |
| Assistant Producer | Steve Wooldridge |
| Photography & Graphics | Charlotte Coward-Williams |



Affiliated to NODA
www.galleryplayers.co.uk
Many thanks for the support of Amberfield School
This amateur production is presented by arrangement with
JOSEF WEINBERGER LIMITED



1983
Seat belts made compulsory... The compact disc appears.



1981
Charles & Diana marry... MTV is launched.



1984
Torvill & Dean win Gold... Band Aid... Miner's Strike

1982
First artificial heart
Trivial Pursuit launched



1980
John Lennon shot
Inflation 21.8%



1985
First British mobile phone call... East Enders starts



sponsored by



www.kerseys.co.uk

Ipswich Operatic & Dramatic Society

COMING SOON!
Our award winning musical treat

SOUNDS FAMILIAR



**5th-8th
October 2011**

Spa Pavilion Theatre, Felixstowe
Box Office 01394 282126

**GALLERY
PLAYERS**
present

OUR HOUSE



CAST

Joe Casey Joe Leat
Sarah Vicky Jam
Dad Simon Bowen
Kath Sam Horsfield
Reecey Stephen Lawrence
Emmo Tom Mayhew
Lewis Mike Cook
Billie Rachel Lucock
Angie Charlotte Mitchell
Mr Pressman Steve Wooldridge
Callum David Jones

The people of Casey Street & assorted characters

Wade Ablitt
Lindsey Ashford
Karina Bull
Lorena Cenci
James Fordham
Helen Johns
Michael Jewell
Sian Naylor
Catherine Roberts
Andy Rowland-Hinton
Adrian Russell
Norman Rutterford
Alli Sparrow-Hewitt
Paddy South
Victoria Tarbard
Lucy Taylor
Laura Lucock
Ian Quickfall

BAND

Musical Director/ Richard Healey
Keyboard
Keyboard 2 Joe Cleary
Sax/Clarinet/Flute Mike Wren
Trumpet/Flugelhorn John Jermy
Guitars Kevin Butcher
Bass John Lindley
Drums/Percussion Gerry Gillings

MUSICAL NUMBERS

ACT 1

Our House
Simple Equation
My Girl
Magistrate's Court
(All I Wanted/My Girl)
Baggy Trousers
Simple Equation
Embarrassment
Embarrassment Reprise
(Encouragement version)
Driving In My Car

My Girl Reprise
Driving In My Car Reprise
Simple Equation Reprise
Shut Up
Tomorrow's Just Another Day/
The Sun and the Rain

Joe and Company
Dad
Emmo, Joe, Lewis
Kath, Dad & Joe

Reecey, Joe & Company
Dad
Joe & Assorted Characters
Joe, London Alarms Boss
& Company
Joe, Emmo, Lewis, Sarah,
Billie & Angie
Sarah & Dad
Dad, Salesman & Joe
Dad
Reecey, Joe & Coppers
Joe & Company

There will be a 20 minute interval

ACT 2

Night Boat To Cairo
Wings Of A Dove
One Better Day
Our House Reprise
Rise And Fall
House Of Fun/Rise And Fall
/My Girl
NW1
Embarrassment Reprise (Law Firm)
My Girl/NW1/Simple Equation
It Must Be Love
The Sun And The Rain Reprise
Simple Equation Reprise
Primrose Hill/Our House Reprise

Dad
Company
Dad, Joe & Kath
Joe & Dad
Joe & Company
Joe, Julie & Mr Pressman
Sarah & Dad
Sarah & Joe
Joe & Assorted Legal Characters
Sarah & Dad
Sarah & Joe
Joe, Stallholders & Company
Dad & Joe
Dad, Joe & Company





REHEARSALS
THE NEW WOLSEY
THEATRE
2011

CAST



JOE LEAT

Joe
Joe trained at East 15 Acting School. Since leaving drama school he has played Flute in *A Midsummer Nights Dream* (Skewbald Theatre) and been on two national tours with Solomon Theatre Company performing in their educational show *Last Orders*. He has been part of the Felixstowe Summer Youth Project for two consecutive years playing Galileo in *We Will Rock You* and Don in *Summer Holiday*. He also took a lead part in the Sunderland Youth Experience playing Roddy in *Boogie Nights* at the Sunderland Empire. Joe is thrilled to be returning home to take the role of Joe Casey.



TOM MAYHEW

Emmo
TO COME



VICKY JAM

Sarah
This is Vicky's second performance with Gallery Players. She has been performing in shows ever since she could say the words "watch me!" Focusing on dance for many years, it came as no surprise that she found that her true passion was not only dancing, but combining all 3 performance disciplines. For Vicky, playing the part of Sarah will be bitter sweet as she is "undeniably her favourite part to date", but her last in the area for some time. Vicky finds herself, much like Sarah, leaving for University to pursue her dream of becoming a Lawyer (a different type of performing all together!). A dream, with a lot of hard work, she hopes to fulfil.



MIKE COOK

Lewis
Michael has been involved with Gallery Players for many years appearing in various shows such as *Spring and Port Wine* (Arthur); *Flare Path* (Teddy); *A Night at the Dogs* (Danny); *The Sunshine Boys* (Ben); *You're a Good Man Charlie Brown* (Schroeder); *Spend Spend Spend* (Ensemble) and last year's highly successful production of *Rent* (Paul). He was last seen at the Regent Theatre in April playing the part of Danny in IODS' *Calamity Jane*. Michael admits he has not been seen in school uniform in a long while (!), but is having a blast playing Lewis in *Our House*.



SIMON BOWEN

Joe's Dad
Since playing a dancing piccolo player in his first part in *Music Man* his roles include a gambling hen pecked performer in *Kiss Me Kate*; a tights wearing Knight in *Camelot*; the strongest man in the world (Who has no libido) in *Lil Abner*; A tap dancing film star in *Singing in the Rain*; Two different hillbilly brothers in *Seven Brides for Seven Brothers*; a dashing lieutenant in *South Pacific*, a deranged presidential assassin in *Assassins*; a Prince and a wolf in *Into The Woods*; A Japanese narrator in *Pacific Overtures* and many more besides. His work as a director include directing *The Full Monty* twice. He would like to send hugs, kisses and love to his three children Sebastian, Reuben and Roseanna.



CHARLOTTE MITCHELL

Angie
Charlotte has just finished studying for her A levels in Drama, Media studies and Sociology. She has been a part of Theatretrain for nine years taking part in a variety of different shows both locally and in London including at The Royal Albert Hall. She was recently asked to become a student teacher at Theatretrain. Other parts include Dorothy in *The Wiz* and Urleen in *Footloose*. Charlotte's debut performance with Gallery Players was in *Rent* last summer. She feels "absolutely honoured" to be playing the part of Angie in *Our House* and she would like to thank everyone involved for making it such an enjoyable and memorable show to be in.



SAMANTHA HORSFIELD

Kath
Sam started treading the boards in Panto for the Landseer Players over 30 years ago. Her varied roles include *Jesus Christ Superstar* (Mary) and *Summer Holiday* (Stella) for Ipswich Operatic and Dramatic Society at The Regent Theatre. She has been a Gallery Players member since 1996. Her favourite roles are Sue (*A Slice of Saturday Night*) Comrade Charlotte (*Flora the Red Menace*), Ronette (*Little Shop of Horrors*) and Lucy (*You're a Good Man Charlie Brown*) Her personal highlight was portraying Viv Nicholson in the Musical *Spend Spend Spend* at the Wolsey Theatre a few years ago. She hopes you all enjoy the show.



RACHEL LUCCOCK

Billie
Rachel attended Linda Shiptons School of Dancing and was a member of the Ipswich Co-op Juniors from the age of 6. She took part in many productions playing roles such as Meatloaf in Queens *We Will Rock You* and Madame De La Grande Bouche in Disney's *Beauty and the Beast* at the Regent theatre last year. Rachel's first performance with Gallery Players was just last summer in *Rent* where she was a member of the ensemble. Rachel also took on the role of Curleys Wife in Serendipity Theatre company's debut performance of *Of Mice and Men* which won the Best Production in the area for 2010 and the Best Drama Production for Noda region 12.



STEPHEN LAWRENCE

Reecey
Stephen was first on the Wolsey Stage when he was a Northgate Sixth Former whilst being taught drama by Gloria Henshall (Ruthie's Mum). After a long break he made his next appearance in 2000 as Harry the Horse in *Guys & Dolls*. Stephen's other roles have included *Sugar* (Joe/Josephine); *Camelot* (King Arthur); *Carousel* (Mr Snow); *King & I* (King of Siam) *Thoroughly Modern Millie* (Trevor Graydon); *My Fair Lady* (Freddie Eynsford Hill); *Anything Goes* (Billy Crocker); *Oliver* (Fagin) and most recently Officer Crabtree in *'Allo 'Allo*. He says *Our House* is the most enjoyable show he has been involved in but he's looking forward to his hair growing back!



STEVE WOOLDRIDGE

Mr Pressman
Favourite roles include the title role in Macbeth, *Children of a Lesser God* (James Leeds - winner, Best Actor, Ipswich Drama Festival), *West Side Story* (Tony), *Jesus Christ Superstar* (Pilate), *King and I* (The King), *South Pacific* (Emile), *The Sound of Music* (Von Trapp), *My Fair Lady* (Professor Higgins). As Director, Steve has had a diverse career with 16 productions for Gallery Players including last year's *Rent*. He has also directed around the country including *We Will Rock You*, *West Side Story*, *Boogie Nights* and *Oliver* at Sunderland Empire Theatre. He recently created Serendipity Theatre Company; their debut production, *Of Mice And Men*, had a two-week sell out run at the Sir John Mills Theatre.

REFLECTIONS OF THE 80s

TWO GENERATIONS TELL US WHAT THEY THINK LIFE WAS REALLY LIKE IN THE 1980s...



SALLY SCURRELL

Director

MY MEMORIES OF THE EIGHTIES ARE MOSTLY ABOUT TUCKER BOOTS, Grange Hill and being desperately in love with Suggs (Madness) and Simon le Bon (Duran Duran). Probably my most vivid memory was a holiday in Spain with my best friend Stephanie, age 16yrs! We wore head bands and Ra-Ra skirts, listened to 'Girls On Film' and 'Roxanne'. I met a young man on the beach who had just started writing for Smash Hits Magazine. He told me to look out for a band called U2 as he said they were going to be huge! How right he was and now every time I hear a U2 track I smile. The same guy gave us Simon le Bon's phone number which of course we rang and there is my teenage claim to fame. Two minutes on the phone to a very confused but charming Simon! There are so many memories that sometimes they become muddled, but I do recall the jeans I wore to the Bramford disco with a white piping down the legs. Queuing outside the Corn Exchange for the Piggy Wink disco on a Thursday night when all you wanted to do was to be asked out by a skinhead in a pork pie hat. The music for me immediately conjures up memories of that time in my life and there is always a song which puts you somewhere. Who else remembers slow dancing to 'Knights in White Satin' as the lights came up! The 80's were a special time for me and, like the hero in our story, it was a 'rite of passage'. I left the comfort of school and took my first quivering steps into the outside world and adulthood. I look back at this time of my life like so many with fondness and probably rose tinted glasses, but will stand by my guns when I say that it was an excellent time to be a teenager and I am so glad to have experienced the 80's firsthand...Even though of course that makes me sooo old!!!

JOE LEAT

Joe

TO ME THE 1980'S HAD ALWAYS BEEN REPRESENTED BY A SELECTION OF CHEESY MUSIC TRACKS that were and still are played at the end of a night out on the dance floor. Such "classics" as Wham's Wake Me Up Before You Go Go and Love Shack by the B-52's stick out in my mind for various reasons! There was always mentions of a woman called Margaret Thatcher and a number of mine closures which was eventually illustrated to me by Billy Elliot! A simple Google image search of 'the 80's' reveals many of the things I associate visually with the decade - Madonna with a very different look to that which she now sports and people wearing clothes with a colour palette seemingly based on a Rubik's cube (which was licensed to be sold by The Ideal Toy Corp. in 1980). Taking the role of Joe Casey has been a fantastic challenge, it has led me through many different areas of research such as the Irish Community in London, the history of Camden and Madness themselves. I took particular pleasure in watching a short film called 'Take It or Leave It' which shows the rise to fame of Madness, in which the band play their slightly younger selves. For me 'Our House' highlights how every single minuscule moment and choice effects the journey of our lives. Not unlike standing at the entrance to Camden Underground station.



OUR HOUSE WRITER TIM FIRTH

is an established and well respected writer. He has written for theatre, film and television and first came to the attention of theatregoers with the worldwide hit comedy *Neville's Island*, and to television viewers with the 1994 series *All Quiet On The Preston Front*. On stage he went on to win the Olivier for his musical *OUR HOUSE*, and on television to win awards and plaudits for works including *Neville's Island*, *The Flint Street Nativity*, *Cruise Of The Gods* and children's series *The Rottenrolls*. Tim's first two feature films were released in 2003. *Calendar Girls* starring Helen Mirren and Julie Walters went to number one in the UK, becoming one of the most successful British films of all time and one of the top fifty grossing films in UK cinema history. *Blackball*, starring Paul Kaye and Vince Vaughn reached number three in the UK charts as did his third film, *Kinky Boots* starring Chiwitel Ejiofor and Joel Egerton. Most recently Tim released a solo album, *Harmless Flirting*, completing a tour of words and music with fellow playwright Willy Russell which won wonderful reviews at the Edinburgh Festival. His recent work for stage includes the *The Safari Party* which toured the UK, *Absolutely Frank* which premiered at the Stephen Joseph Theatre in Scarborough and the stage version of *The Flint Street Nativity* at the Liverpool Playhouse which became the most successful production in the theatre's recent history.

1-31 August 2011

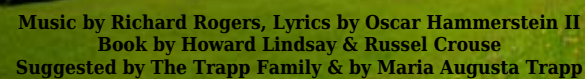
For more info, visit
www.aldeburgh.co.uk
or call Box Office
on 01728 687110

Aldeburgh Music

GALLERY
PLAYERS
present

SIR JOHN MILLS THEATRE, IPSWICH

**An Amateur Production By Arrangement
with Josef Weinberger Ltd**



MADNESS WERE ONE OF THE LEADING BANDS
OF THE SKA REVIVAL OF THE LATE '70S AND
EARLY '80S. As their career progressed, Madness
branched away from their trademark "nutty sound"
and incorporated large elements of Motown, soul,
and British pop. Although the band managed one
crossover American hit in 1983, the band remained a
British phenomenon, influencing several successive
generations of musicians and becoming one of the
most beloved groups of the decade. The origins of
Madness lie in a ska group known as the Invaders,
which was formed by Mike Barson, Chris Foreman,
and Lee Thompson in 1976. By 1978 the band had
changed their name to Morris and the Minors and had
added Graham "Suggs" McPherson, Mark Bedford,
Chas Smash, and Dan Woodgate to the group. Later
in 1978, they changed their name to Madness, in
homage to one of their favorite Prince Buster songs.
The following year Madness released their debut single,
a tribute to Prince Buster entitled *The Prince*, on the
Two-Tone record label. Jerry Dammers of The Specials
and Two-Tone founder first became aware of the band
via graffiti sprayed on walls in North London referring to
"Chalky Suggs". They handed Jerry Dammers a DEMO
tape and although he was impressed he said it "was a
mess and that no other label would have signed them".

Dammers, who affectionately called them a “bunch of chancers” gladly offered them a deal with the label for a one off single. The song was a surprise success, reaching the British Top 20. Following its success, the band signed a record contract with Stiff Records and released another Prince Buster song, *One Step Beyond*, which climbed to number seven. Madness quickly recorded their debut album, also titled *One Step Beyond*. Released in 1979, the album peaked at number 2 in Britain and it stayed in the charts for well over a year. At the beginning of 1980 the band's third single, *My Girl*, peaked at number 3. For the next 3 years the group had a virtually uninterrupted run of 13 Top 10 singles, during which time they were one of the most popular bands in Britain, rivaled only by the Jam in terms of widespread popularity. Where the Jam appealed to teenagers and young adults, Madness had a broad fan base, reaching from children to the elderly. Which didn't mean their music was diluted. They continued to expand their sound, both musically and lyrically. **Our House** the musical is a very British celebration featuring the music of a very British group. Although their heyday was almost 30 years ago, the music of Madness has an ageless quality, it's lyrics clever and witty. The warmth which people feel for Madness is witnessed by the 'sell out' audiences we've had this week, 'It Must Be Love'!! x

IT'S NOT EVERY DAY THAT THE OPPORTUNITY TO STAGE A SHOW LIKE OUR HOUSE COMES ALONG. It's a great story full of human emotion, funny and heart-wrenching, but more than that it is brought to life by the immediately recognisable iconic and anthemic hits of Madness, the classic band from the 80's and a great favourite of mine. For some it will be an introduction to music they may have never known. For many of us it will bring memories of the 80's flooding back. Either way, I hope you'll love the music as much as I do. Tim Firth has created a masterpiece, like *Mamma Mia*, delicately weaving the story around the original hits. It's almost as if Madness had a show in mind when they wrote the songs. Directing 'Our House' has been a privilege, a pleasure and no small challenge – One Step Beyond even! Our House boasts the most costume changes for any single performer, frantic changes and frenetic numbers. Fortunately I have been blessed, not only with a talented and enthusiastic cast but a superb production team as well. The show has probably been the most complicated technically that I have ever worked on and without the support of David, Lee, Don, Sue, Steve and Our producer Steve T would have been virtually impossible and would certainly not have been the fun that it was. I must say a special thank you to Richard for his tireless support and enthusiasm. I hope you enjoy the show as much as I have done directing it.

The Pit Paper Mill Lane Bramford Ipswich IP8 4DA
01473 830719 or 01473 832878

Great Whip Street Ipswich Suffolk
 IP2 8EY **01473 602483**



BEST PRICES PAID FOR YOUR SCRAP

Whip Street Motors Ltd

Ferrous & Non Ferrous Metal Recyclers

East Anglia's Largest End of Life Vehicle Treatment Facility

Vehicles de-polluted to Environmental Standards

The Sandwich & Coffee Shop

Sandwiches * Baguettes * Hot Food * Drinks and Snacks

Office Lunches * Full Buffet Menu * Delivery Possible

17 The Thoroughfare Woodbridge
 Tel/Fax 01394 384941

JUST TILES

CERAMIC – SLATE
 TERRACOTTA –
 MARBLE – MOSAIC

Visit your local specialists at:
**Smithfield, Melton,
 Woodbridge, Suffolk IP12 1NH**



**Tel: 01394 382067
 Fax: 01394 389047**

The Robert Douglas Hair Workshop

86 Thoroughfare Woodbridge



01394 387 436

Global Trading

The place to go for unusual giftware, exclusive lamps and an eclectic range of furniture

1 Quay Street Woodbridge IP12 1BX
 and 115 High Street Aldeburgh IP15 5AR
 Tel: 01394 610800/01728 453460 www.globaltradingshop.com




The Gallery Players was formed in 1985 by Pat Taplin to produce rarely performed plays and musicals that larger companies would find uneconomic or which only use a few actors. The company quickly established a reputation for quality and excellence. Broadly speaking our aims are:

- To exploit a niche for staging productions that are progressive and exciting in both content and execution.
- To embrace both new and established works
- To act as a vehicle for engaging new talent as well as established members
- To foster a group of actors and technicians that are truly a community
- To foster links with schools and colleges.

We generally stage three productions a year, a mix of plays and musicals. Performing lesser known shows is always difficult, particularly when it comes to building an audience and balancing the books, but by sticking to our aims we have grown an audience that, hopefully, trust us to produce interesting work. Although we have a strong pool of performers

new blood and talent is always welcome as are people wishing to work on the technical side.

The Players founder, Pat Taplin, who until recently directed the majority of our shows, has taken a step back to act as our President. The company is now run by a small steering group: Dave Borthwick, Helen Clarke, Richard Healey, Steve Taplin and Steve Wooldridge. We encourage other directors to take the reins of their own pet projects, allowing them to cast freely and create individual shows with the backing of our excellent technical and production crew. Our only insistence is that the final show should entertain and stimulate our discerning audience and should exude that sense of professionalism we strive for.

Gallery Players have won several awards including the NODA Eastern Area Shield for Best Production with 'Carnival' in 1999 and the Councillors Cup in 2000 and 2003 for 'The Baker's Wife' and 'Kiss Me Like You Mean It'.

Our Motto is 'making theatre exciting', which we like to think we do, most of the time!

PAST SHOWS

1985 Coward Custard, 1986 Happy As A Sandbag, 1987 Sail Away, 1988 Something's Afoot, 1989 Company, 1990 The Best Little Whorehouse In Texas, 1991 The Hired Man, 1992 Snoopy – The Musical, A Little Night Music, 1993 Stepping Out, Cabaret, 1994 Assassins, The Ghost Train, Into The Woods, Hobson's Choice, 1995 Man Of La Mancha, Steel Magnolias, City Of Angels, Scent Of Flowers, 1996 Little Shop Of Horrors, The Most Happy Fella, Blue Remembered Hills, 1997 Dancing At Lughnasa, Pacific Overtures, Chicago, Hard Times, 1998 The Resistible Rise of Arturo Ui, Something's Afoot, 1999 Carnival, Trip To Bountiful, The Boys From Syracuse, Tons Of Money, 2000 On Golden Pond, The Baker's Wife, Kiss Of The Spiderwoman, A Slice Of Saturday Night, One Flew Over The Cuckoo's Nest, 2001 Mrs Warren's Profession, A Funny Thing Happened On The Way To The Forum, Billy, Breezeblock Park, 2002 The Memory Of Water, Flora The Red Menace, A Slice Of Saturday Night, Radio Times, 2003 Kiss Me Like You Mean It, Days Of Hope, Honk!, And A Nightingale Sang, 2004 Bouncers, Merrily We Roll Along, Talking Heads, You're A Good Man Charlie Brown, 2005 Kindertransport, She Loves Me, A Night At The Dogs, 2006 Amy's View, Passion, With Love, Colder Than Here, 2007 This Happy Breed, Grand Hotel, You Want Chilli Sauce With That, Marry Me A Little, The Sunshine Boys, 2008 Oh Kay!, Spend Spend Spend, To Kill A Mockingbird, 2009 The Long Road, Follies, Flare Path, 2010 Ordinary Days, Rent, Spring & Port Wine, 2011 My Mother Said I Never Should, Our House.

FORTHCOMING PRODUCTION October 26 -29 2011
HEROES translated by Tom Stoppard, Sir John Mills, Theatre.

OUR HOUSE

PRODUCTION CREDITS

Director	Sally Scurrall
Musical Director	Richard Healey
Choreographer	David Hockley
Set Designer	Dave Borthwick
Lighting Designer	Ed Yetton
Sound Designer	Lee Boswell
Sound Technician	Ron Bloomfield
Sound Assistant	Will Dowe
Wardrobe	Leeann Ling
Company Stage Manager	Sue Noakes
Deputy Stage Manager	Don Perry
Assistant Stage Manager	Duncan Broatch
Props	Sue Simmons Sue Noakes
Stage Crew	Rachel Doy Matt Meyrick Shaun Whymark Dave Borthwick Colin Mudd Matt Mudd Duncan Broach Sue Noakes
Set Construction	Duncan Broatch Mike Wadman Sue Noakes Rachel Doy Steve Wooldridge
Dressers	Flora Charlton Be Allerton Gemma Pipe Betty Charlton Suzi Holland Saffron Harrel Steve Taplin
Producer	Steve Wooldridge
Assistant Producer	Helen Johns
Marketing	Charlotte Coward-Williams
Photography & Programme	Philip Rawe
Front of House Manager	Brenda Caddick Elaine Dowe
Front of House Assistants	Graham Dowe Maggie Mudd Colin Mudd Mike Wadman Judy Wadman Linda Wooldridge Yolande Lockwood

ACKNOWLEDGEMENTS

Mike & Zena Steward•David Henshall & Andrew Clarke - EADT•
 Wayne Savage - Evening Star•Glen Pearce - BBC Radio Suffolk•The
 Buttermarket Centre•Woodbridge Library•Chris Finbow & Museum St.
 Methodist Church•Linda Ingram of Amberfield School•Coes, Ipswich
 - for help with School Uniforms•Whip Street Motors - All car panels &
 parts•Ipswich High School For Girls, Woolverstone Hall - School Desks•
 Anglia Office Warehouse•Pam White - IODS•Sue Simmons•Dennis Lowe
 Theatre Company•Coop Juniors•Appeal Theatre Group•Merc - Ipswich•
 CHRISALIS Clowning•Katy Darnell•East of England Cooperative Society
 - Funeral Department and The New Wolsey Theatre Staff

FRIENDS OF THE GALLERY PLAYERS

Mrs J Bolton	Dennis Pennock
Brenda Caddick	Philip Rawe
Mrs D Cornford	Mr and Mrs Richmond-Hardy
Mrs P Curtis	Ally and Roy Riley
Mrs B Dredge	Mr and Mrs E Smart
Paul Goymour	Mrs P White
Mr and Mrs P Holder	John Whitear
Jean Harvey	Mr and Mrs Quelch
Margaret Morphew	HONARARY FRIENDS
Mrs M Morton	Gary Avis
Mr and Mrs C Mudd	Margaret Haddock
Mrs P Osborne	Michael Morton

If you would like to help us to continue to present our shows to a high standard and – just as importantly – raise money to help others, perhaps you would like to become a 'Friend of the Gallery Players'. You will receive advance information and discount booking forms for all our productions & newsletters. To become a 'Friend', or for information on other forms of sponsorship please contact Steve Taplin on 01473 833403 (stephen.taplin@virgin.net)

"Whatever the problem, your business will benefit from Remedy's nationwide network of experts."

- Mentoring
- Business strategy
- Financial restructuring
- Turnaround plans
- Succession and exit planning
- Grooming for sale



Call us for your free business health check

Your Business Support Network

For further information on
how we can benefit your
business please contact us.

tel.01473 310833

www.remedyforbusiness.com

info@remedyforbusiness.com

9 Tollgate Road, Capel St Mary, Ipswich, Suffolk. IP9 2HB