

THE  
gallery  
PLAYERS

A PLACE WHERE NOBODY DARED TO GO...

THE  
gallery  
STUDIO  
THEATRE  
IPSWICH

# XANADU

THE MUSICAL

BOOK BY  
DOUGLAS CARTER BEANE

MUSIC & LYRICS BY  
JEFF LYNNE & JOHN FARRAR



# PROGRAMME

# XANADU

THE  
gallery  
PLAYERS

Music and Lyrics by **John Farrar & Jeff Lynne**

Book by **Douglas Carter Beane**

## CAST

Clio/Kira

**Charlee Bullock**

Sonny Malone

**Daniel Mack Shand**

Danny Maguire

**Martin Leigh**

Melpomene

**Emily Watt**

Calliope

**Clare Dungey**

Erato/Others

**Kathryn Nielsen**

Euterpe/Others

**Rebecca Hutchison**

Polyhymnia/Others

**Holly Grueber**

Terpsicore/Others

**Jack Davis**

Thalia/Others

**Jordan Peck**

Urania/Others

**Alex Croft-Mulvey**

## BAND

Keys I/Conductor

**Matthew Snow**

Keys II

**Olly Wood**

Guitars

**Dermot Gillespie-Gardiner**

Bass

**Greg Davies**

Drums

**Ollie De Vita**

## CREATIVE

Director/Choreographer

**Wade Ablitt**

Choreographer

**Chloë Brown**

Musical Director

**Matthew Snow**

Rollerskating Instructors

**Martin Harris, Catherine Aitchison**

Photography

**Charlie Leggett**

Artwork/Programme Design/Publicity

**Wade Ablitt**

## PRODUCTION

Set Design

**Wade Ablitt, Dave Borthwick**

Set/Prop Construction

**Dave Borthwick, Friends of Gallery**

Lighting/Sound Design & Operation

**James Aleksic (JLA Sound & Light)**

Lighting Operation

**Rachel Doy**

Stage Management

**Heather Lane**

Head of Wardrobe/Seamstress

**Evie White**

Costume/Prop Sourcing

**Wade Ablitt, Harriet Bacon**

Production Admin Assistant

**Clare Dungey**

Special Thanks

**Alan Ayres, Co-Op Juniors, Burlington**

**Baptist Church, Michael Haywood-Smith,**

**Georgy Jamieson, Ipswich24**

# WELCOME

I first came across “Xanadu” as a prepubescent musical theatre nerd who scoured YouTube for hours watching different clips of Tony Award performances. I instantly went and bought the show’s cast album and became obsessed with the show, so naturally decided to go back and watch the show’s source material... I got 10 minutes into the film and never attempted to watch it again...

This show is a (*sometimes*) loving pastiche of this wild cult film as well as a joyous celebration of love and human spirit. On top of that, the songs are “banger after banger”, as the mortal kids say these days. I have to give huge praise to my cast who not only have submerged themselves in the wacky world of this show, but have also done it all whilst on roller skates! None of that would have been possible without Martin and Catherine, our extraordinary skating instructors, who have been incredibly patient and helpful with our team whilst always making it look exceptionally easy!

This is my 6<sup>th</sup> time directing for The Gallery Players, and one of the greatest joys of the role is getting to work with new people regularly. It’s been such a pleasure to welcome my good friends Matt and Chloë to the team for the first time and their hard work and expertise has been invaluable to the creation of this show. Likewise, we have 5 cast members who are making their Gallery debuts with this show and it is always a joy to see the company growing and welcoming new faces.

Now relax, and welcome to a place where nobody dared to go...



WYNDE BLITT

# SONG LIST

## ACT ONE

I'M ALIVE

CLIO, MUSES

MAGIC

KIRA, MUSES

EVIL WOMAN

MELPOMENE, CALLIOPE, SIRENS

SUDDENLY

SONNY, KIRA

WHENEVER YOU'RE AWAY FROM ME

DANNY, KITTY

DANCIN'

ANDREW SISTERS, THE TUBES

STRANGE MAGIC

MELPOMENE, CALLIOPE, KIRA, SONNY

ALL OVER THE WORLD

SONNY, DANNY, MUSES

DON'T WALK AWAY

SONNY, DANNY, MUSES

## ACT TWO

PHYSICAL

MUSES

FOOL

CLIO, MUSES

THE FALL

SONNY, MUSES

SUSPENDED IN TIME

CLIO, SONNY

HAVE YOU NEVER BEEN MELLOW?

GREEK GODS

XANADU

FULL COMPANY

# PRODUCTION TEAM



**WADE BLITT**  
**DIRECTOR**

Wade is a multi-award-winning director, choreographer, composer and musical director who has been one of the resident directors of the Gallery Players for the last 4 years.

**Director/Choreographer Credits:** *The Secret Diary of Adrian Mole Aged 13¾: The Musical*, *Gutenberg! The Musical*, *Celebrating Sondheim*, *The Mystery of Edwin Drood*, *A New Brain* (The Gallery Players) *Kinky Boots*, *Little Shop of Horrors* (The Spa Pavilion) *Big Fish*, *Our House*, *Mad Hatter at the Movies*, *Betty Blue Eyes*, *Urinetown*, *The Drowsy Chaperone* (Mad Hatter Productions)

**Musical Director credits include:** *Cinderella*, *Kinky Boots*, *Rock of Ages* (The Spa Pavilion) *The History Boys*, *Blood Brothers* (Mad Hatter Productions)

**Composer credits include:** *3 Cheers for Maisy!* (2018 Edinburgh Fringe & Thorington Theatre), *The Snow Queen* (Snape Maltings Concert Hall), *The Importance of Being Earnest* (Thorington Theatre), his original musical comedy “*Tunswick!*” and a cancelled and unaired TV project for CBBC that he still proudly mentions in his bio.

Chloe trained at Bird College studying Professional Dance and Musical Theatre.

**Credits include:** Jan in “*Grease*” (Royal Caribbean Productions), Rita O’Grady in “*Made in Dagenham*” (Bird College)

Chloe has been in lots of amateur theatre in previous years but this is her first time choreographing for a company and hopes you enjoy it as much as she has!

P.s, don’t be fooled, skating is NOT easy!



**CHLOE BROWN**  
**CHOREOGRAPHER**

This is Matt’s first time working as Musical Director for The Gallery Players, despite previously working *ALL OVER THE WORLD*, and has thoroughly enjoyed the challenge and the thrill of working with this scrumptious company (even the *EVIL WOMAN*). He hopes he doesn’t make himself look like a *FOOL*.

Previously Matt has worked as a rehearsal/pit pianist for Gallery’s productions of “*The Mystery of Edwin Drood*” and “*The Secret Diary of Adrian Mole*” and has worked with multiple local companies such as IODS, The Company of Four and Eastern Edge Theatre Company.

Working with this production team has been *MAGIC* and prays you *DON’T WALK AWAY* mid-show *SUDDENLY*.



**MATTHEW SNOW**  
**MUSICAL DIRECTOR**



# IT'S ALL GREEK TO ME

A	I	E	P	E	I	X	L	E	H	T	A	O	L
I	L	L	E	O	C	L	I	O	I	T	I	E	E
P	O	L	Y	H	Y	M	N	I	A	E	R	P	T
C	A	L	L	I	O	P	E	N	A	N	M	L	E
Y	E	U	T	A	I	E	N	G	U	Y	E	O	R
M	C	R	A	C	H	I	L	L	E	S	L	M	P
N	T	A	I	Y	R	A	G	L	A	O	P	E	S
E	I	N	A	X	M	U	P	E	L	M	O	E	I
U	E	I	I	A	E	U	I	E	E	E	M	P	C
T	E	A	A	A	P	H	O	E	E	N	E	E	O
E	S	U	O	L	E	H	C	A	R	M	N	L	R
R	E	S	P	O	O	L	R	N	A	E	E	A	E
P	A	T	H	A	L	I	A	M	T	O	A	E	C
E	O	O	P	E	I	S	O	N	O	E	R	A	A

AGLAOPE  
 PEISONOE  
 CLIO  
 ACHELOUS  
 URANIA  
 NEMOSYNE

TERPSICORE  
 THALIA  
 ERATO  
 THELXIEPEIA  
 CALLIOPE  
 EUTERPE

NOLPE  
 NELPOMENE  
 ACHILLES  
 POLYHYMNIA

# CAST



## CHARLEE BULLOCK – CLIO

Favourite 80's Film: Dirty Dancing  
Favourite 80's Song: Super Freak – Rick James  
Favourite Greek Myth: Daedalus and Icarus

## ALEX CROFT-MULVEY – URANIA

Favourite 80's Film: Heathers  
Favourite 80's Song: The Power of Love – Huey Lewis & The News  
Favourite Greek Myth: Perseus and the Gorgon Medusa



## JACK DAVIS – TERPSICORE

Favourite 80's Film: Footloose  
Favourite 80's Song: Faith – George Michael  
Favourite Greek Myth: The Love Story of Eros and Psyche

## CLARE DUNGEY – CALLIOPE

Favourite 80's Film: The NeverEnding Story  
Favourite 80's Song: Together in Electric Dreams – Philip Oakley  
Favourite Greek Myth: The Tragic Hero Oedipus

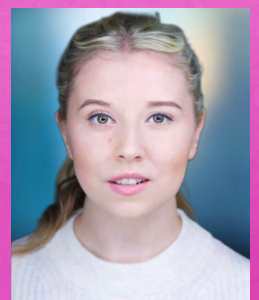


## HOLLY GRUEBER – POLYHYMNIA

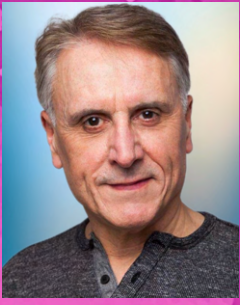
Favourite 80's Film: When The Whales Came  
Favourite 80's Song: Agadoo – Black Lace  
Favourite Greek Myth: The 12 Labours of Hercules

## REBECCA HUTCHISON – EUTERPE

Favourite 80's Film: Dirty Dancing  
Favourite 80's Song: I Wanna Dance With Somebody - Whitney  
Favourite Greek Myth: Bellerophon and Pegasus







## MARTIN LEIGH – DANNY

Favourite 80's Film: Raiders of the Lost Ark

Favourite 80's Song: Running Up That Hill – Kate Bush

Favourite Greek Myth: The Three Sisters of Fate

## KATHRYN NIELSEN – ERATO

Favourite 80's Film: Labyrinth

Favourite 80's Song: Time After Time – Cyndi Lauper

Favourite Greek Myth: The Fate of Orpheus and Eurydice



## JORDAN PECK – THALIA

Favourite 80's Film: Back To The Future

Favourite 80's Song: The Touch – Stan Bush

Favourite Greek Myth: Theseus and the Minotaur

## DANIEL NACK SHAND - SONNY

Favourite 80's Film: The Little Mermaid / Beetlejuice

Favourite 80's Song: I Wanna Dance With Somebody - Whitney

Favourite Greek Myth: Prometheus and The Theft of Fire



## EMILY WATT - MELPOMENE

Favourite 80's Film: The Land Before Time

Favourite 80's Song: Smooth Criminal – Michael Jackson

Favourite Greek Myth: The Name Giving of Athens



# LOVE BARRE

CAT ROBERTS • BARRE INSTRUCTOR

# KISS OF THE SPIDER WOMAN

BY *MANUEL PUIG*  
AN ENGLISH TRANSLATION *ALLAN BAKER*  
26 - 30 SEPTEMBER 2023  
TICKETS FROM £11



# PAST SHOWS

**1985** Cowardy Custard **1986** Happy as a Sandbag **1987** Sail Away **1988** Something's Afoot  
**1989** Company **1990** The Best Little Whorehouse in Texas **1991** The Hired Man **1992** Snoopy:  
The Musical, A Little Night Music **1993** Stepping Out, Cabaret **1994** Assassins, The Ghost Train,  
Into the Woods, Hobson's Choice **1995** Man of La Mancha, Steel Magnolias, City of Angels,  
Scent of Flowers **1996** Little Shop of Horrors, The Most Happy Fella, Blue Remembered Hills  
**1997** Dancing at Lughnasa, Pacific Overtures, Chicago, Hard Times **1998** The Resistible Rise of  
Arturo Ui, Sweeney Todd (The Demon Barber of Fleet Street), Shadowlands, Something's  
Afoot **1999** Carnival, Trip to Bountiful, The Boys From Syracuse, Tons of Money **2000** On  
Golden Pond, The Bakers Wife, Kiss of the Spiderwoman, A Slice of Saturday Night, One Flew  
Over The Cuckoo's Nest **2001** Mrs Warren's Profession, A Funny Thing Happened On The Way  
To The Forum, Billy, Breezblock Park **2002** The Memory of Water, Flora The Red Menace, A  
Slice of Saturday Night, Radio Times **2003** Kiss Me Like You Mean It, Days of Hope, Honk!, And  
A Nightingale Sang **2004** Bouncers, Merrily We Roll Along, Talking Heads, You're A Good Man  
Charlie Brown **2005** Kindertransport, She Loves Me, A Night At The Dogs **2006** Amy's View,  
Passion, With Love, Colder Than Here **2007** This Happy Breed, Grand Hotel, You Want Chilli  
Sauce With That & Marry Me A Little, The Sunshine Boys **2008** Oh Kay!, Spend Spend Spend,  
To Kill A Mockingbird **2009** The Long Road, Follies, Flare Path **2010** Ordinary Days, Rent,  
Spring & Port Wine **2011** My Mother Said I Never Should, Our House, Heroes **2012** Putting it  
Together, Love Story, Be My Baby **2013** A Man of No Importance, Into the Woods, The  
Importance of Being Earnest **2014** Oh What a Lovely War!, Galileo, The History Boys **2015** A  
Day in the Death of Joe Egg, Hairspray, A Streetcar Named Desire **2016** Jumpers For  
Goalposts, The House Of Bernarda Alba, Spring Awakening, Ushers **2017** Urinetown, Far From  
The Madding Crowd **2018** Wolf Hall, Grow Up Grandad, Lucky Stiff **2019** The 25th Annual  
Putnam County Spelling Bee, The Lady In The Van, A New Brain **2020** Gallery at 35 **2021** The  
Mystery of Edwin Drood, Macbeth, Mortuary Sisters/Bully Boy **2022** Celebrating Sondheim,  
Gutenberg!, Di and Viv and Rose, Come Back to the Five & Dime, Jimmy Dean, Jimmy Dean, The  
Secret Diary of Adrian Mole Aged 13¾, Sunday in the Park with George **2023** Daddy Long  
Legs, The Kitchen Sink, Xanadu

**UPCOMING** Kiss of the Spiderwoman, Piaf

## KISS OF THE SPIDER WOMAN

26 – 30 September

Two very different men are thrown together in a bleak South American prison cell: flamboyant homosexual *Molina*, and Marxist revolutionary *Valentin*. In the still darkness of their cell, Molina re-weaves the glittering and fragile stories of the film he loves, and the cynical Valentin listens. Valentin believes in the just cause that makes all suffering bearable; Molina believes in the magic of fantasy that makes everything endurable. Though they seem to share little other than a cell, the two form a bond so intimate – and a relationship so profoundly affecting – that each of them are lead into uncharted territory.

## PIAF

13 – 18 November

The hard hitting story of Edith Piaf. Born and raised on the streets of France *'the little sparrow'* became a global sensation and one of the most celebrated singers of the 20th Century.

Interspersed with her most memorable songs Pam Gem's play was a phenomenon when it opened at the RSC in the late 1970's. It transferred to Broadway and it's star won the Tony Award for her incredible performance. That star was Jane Lapotaire, a 'native' of Ipswich who attended Northgate School in the town.

Piaf's story is full of dramatic highs and crashing lows, and we are thrilled to bring it to you this November.

THE  
gallery  
PLAYERS

2024  
PROGRAMME

COMING SOON



THE  
*gallery*  
PLAYERS

THE  
*gallery*  
STUDIO  
THEATRE  
IPSWICH